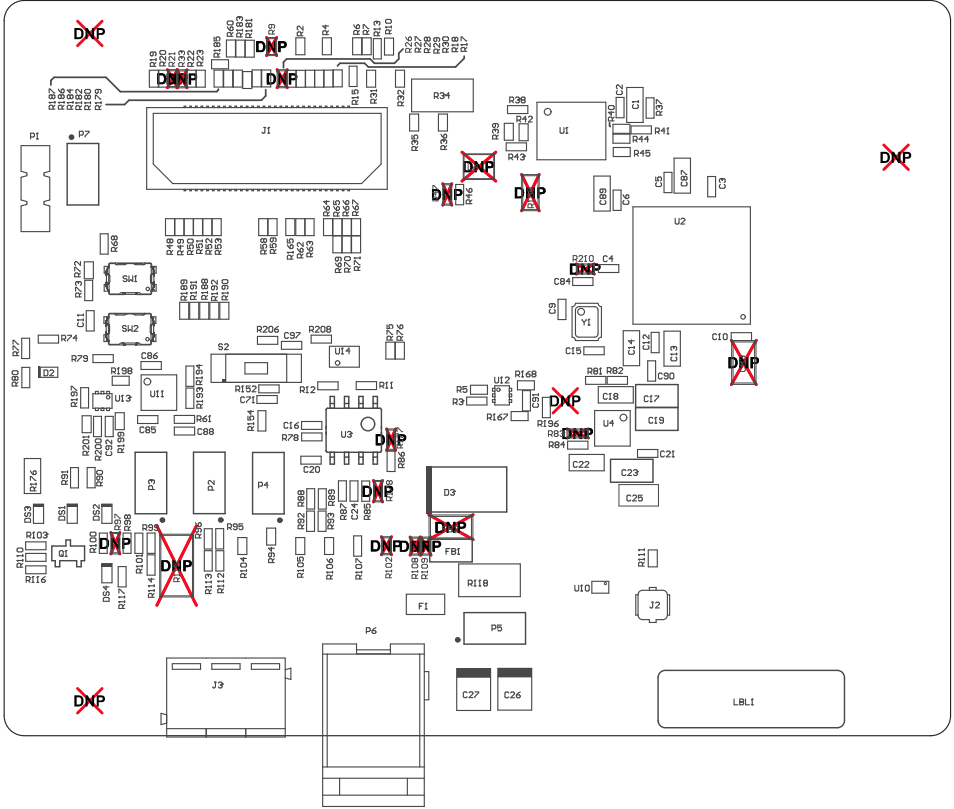
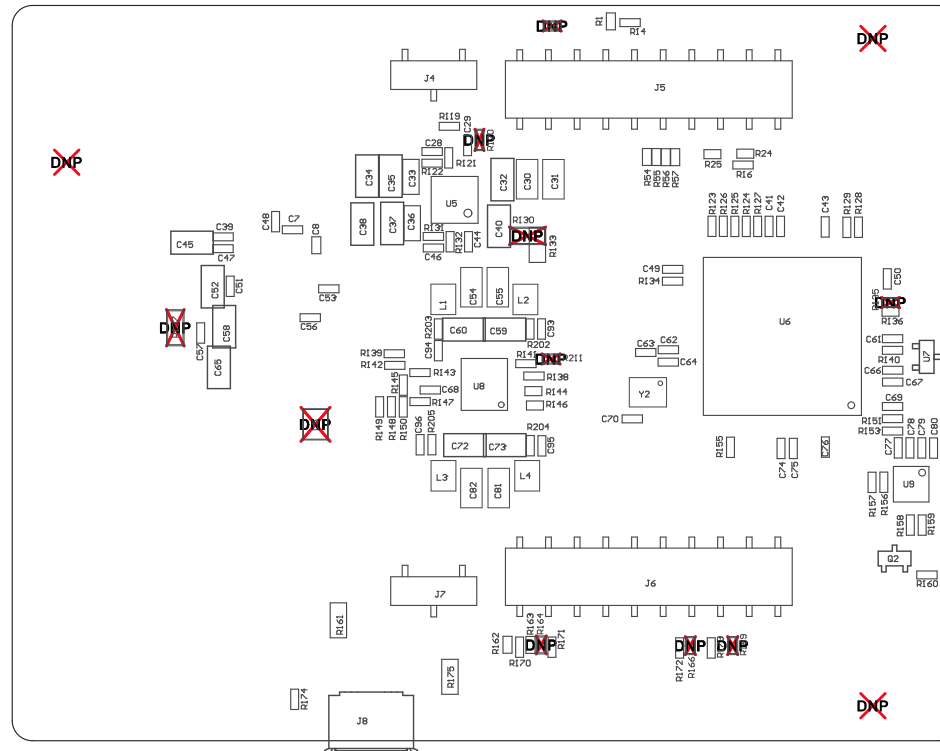


- ZZ1 ■ Install label in silkscreened box after final wash. Text shall be 8 pt font. Text shall be per the Label Table in the PDF schematic.
- ZZ2 ■ These assemblies are ESD sensitive, ESD precautions shall be observed.
- ZZ3 ■ These assemblies must be clean and free from flux and all contaminants. Use of no clean flux is not acceptable.
- ZZ4 ■ These assemblies must comply with workmanship standards IPC-A-610 Class 2, unless otherwise specified.
- ZZ5 ■ Micro USB cable, Brackets, Screws, Nuts, Jumpers and Bump on need to be place in a plastic bag

COMPONENTS MARKED 'DNP' SHOULD NOT BE POPULATED.
ASSEMBLY VARIANT: 001



PCB VIEWED FROM TOP SIDE	BOARD #: PROC011	REV: B	SUN REV: Not In VersionControl
Assembly TOP	TID #: N/A		
PLOT NAME = Top Assembly Drawing	GENERATED : 1/28/2020 2:14:00 PM	TEXAS INSTRUMENTS	



COMPONENTS MARKED 'DNP' SHOULD NOT BE POPULATED.
ASSEMBLY VARIANT: 001

PCB VIEWED FROM BOTTOM SIDE	BOARD #: PROC011	REV: B	SUN REV: Not In VersionControl
ASSEMBLY BOTTOM	TID #: N/A		
PLOT NAME = Bottom Assembly Drawing	GENERATED : 1/28/2020 2:14:01 PM	TEXAS INSTRUMENTS	